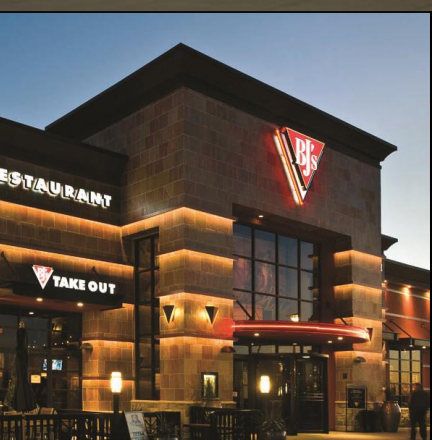


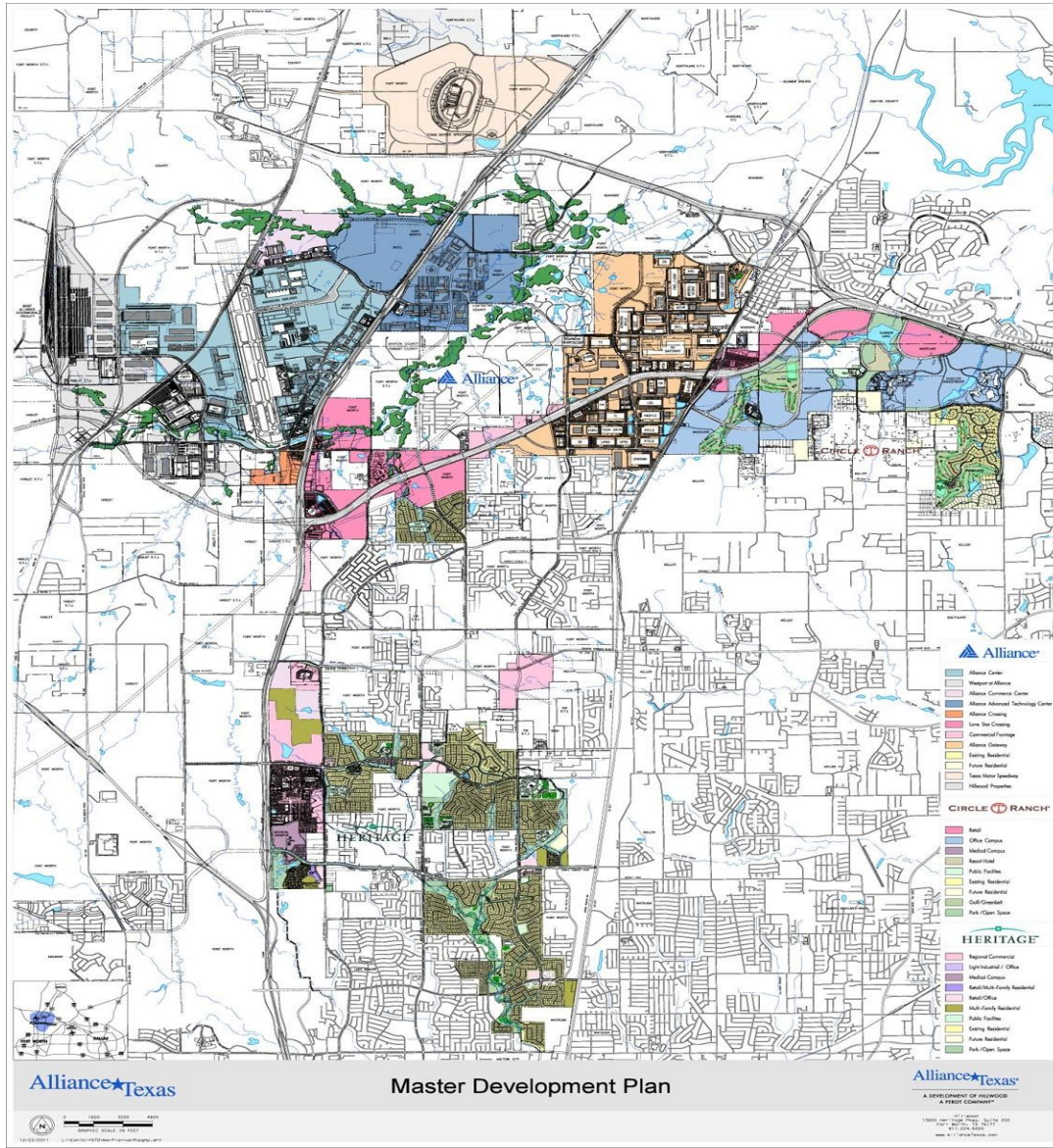
# Alliance★Texas<sup>®</sup>



January 19, 2012



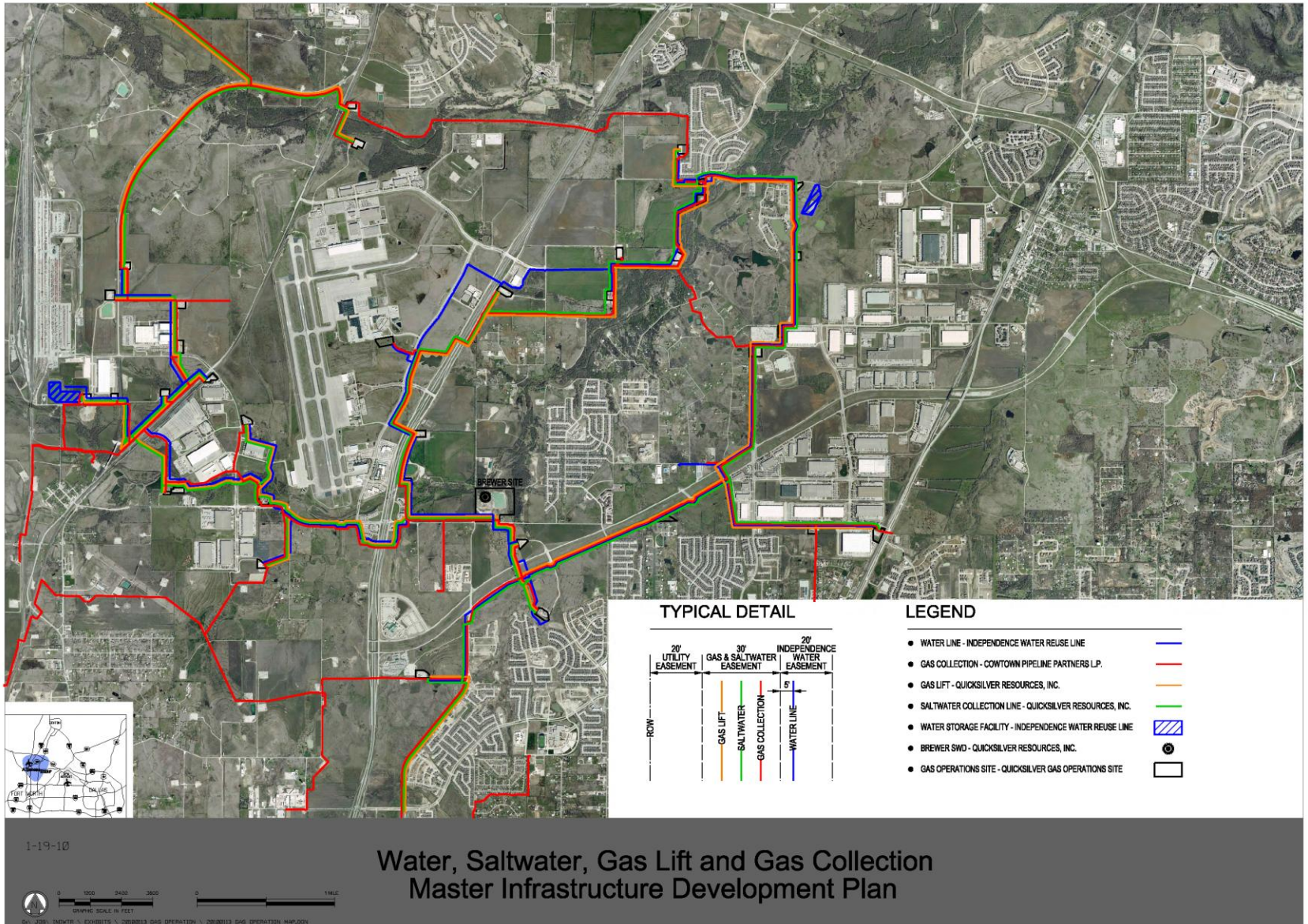
## MASTER DEVELOPMENT PLAN



## INFLUENCES

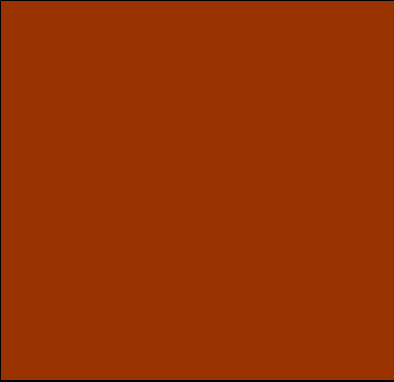
- 17,000 Acre Master Planned Development
- 2001 - Beginning of Alliance Gas Development
- Long range planning and organization for new concept
- Pad and easement impact on developable property
- Impact on infrastructure
- Reuse and Recycling
- Aesthetics and Landscaping

# MASTER INFRASTRUCTURE PLAN

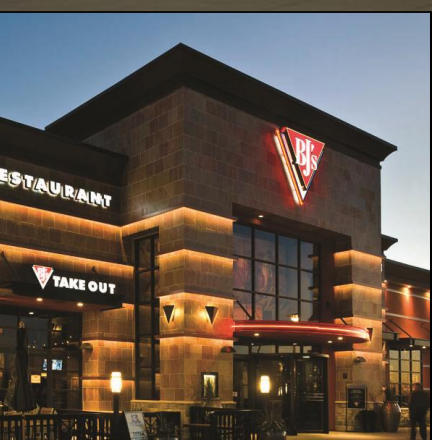


## DIRECT IMPACTS

- Emissions and Air Quality
- Public Safety
- Increased truck traffic
- Shortens life of roadway system
  - Roadway designed for 25 years
  - 400 gas wells = 160,000 trips per year = 12 year road life
- Doubles cost of road for same service period
- Maintenance
- Dust Control



# Alliance★Texas<sup>®</sup>



Thank You

